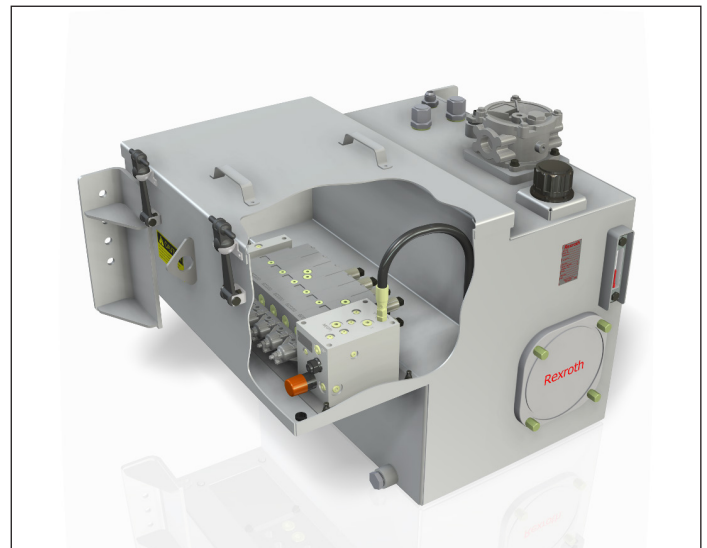


# Compu-Spread VTM Valve Tank Module

04.2016



► **Modular M4 valve enclosure with reservoir, for rear frame installation with top valve mount, model RFTVM**



► **Modular M4 valve enclosure with reservoir, for side frame installation with side valve mount, model SFSVM**

Rexroth's CS VTM valve tank modules reduce the assembly time for truck building by pre-packaging control valves, cables, controller and reservoir into an engineered module. They also reduce the space required on the truck and allow other fitting activities to be done in parallel. Assemblies are application-configured and pre-tested before truck installation, further reducing commissioning time.

Service of any controls in the valve enclosure is done by quick removal of the cover via the heavy duty hood latches. With cover removed, the valve assembly, cables and other assemblies or electronics inside are readily accessible.

VTM fabrications are available in either carbon or stainless steel. Carbon steel enclosures have a polyester powder coating which provides good protection from harsh winter working environments. Reservoir interiors are Red Glyptol coated. Various standard configurations and sizes are available—custom assemblies can be offered on request.

This flexible, compact and cost effective valve and tank assembly simplifies the assembly of a Snow & Ice truck, offers great protection to all enclosed components, and facilitates maintenance where it is required.

## Tank Features

- Reservoirs leak-tested before shipment
- Float switch for low oil level shutdown
- Temperature switch available upon request
- Fluid level sight gauge
- Surface mount in-tank 10 micron return filter
- Filter element clogging indicator
- Provision to fill tank through return line filter
- In-tank magnet
- 'Raised-mount' tank breather
- Sufficient pump suction, return and leakage connections
- Cast AL (passivated) cleanout cover (S/S on request)



► Modular M4 valve enclosure with reservoir, for rear frame installation with side valve mount, model RFSVM



► Modular M4 valve enclosure with reservoir, for side frame installation with bottom valve mount, model SFBVM

### Technical Data

VTM Model	RFTVM		SFSVM	RFSVM			SFBVM	
<b>Size</b>	212	270	151	160	227	270	151	172
<b>Nominal Tank Capacity in L (US gal.)</b>	212 (56)	270 (71)	151 (39)	160 (42)	227 (59)	270 (71)	151 (39)	172 (45)
<b>Weight (dry) in kg (lb.), without valves</b>	153 (337)	172 (379)	111 (244)	196 (431)	221 (487)	246 (542)	99 (218)	103.5 (228)
<b>Dimensions</b>								
<b>Length mm(in.)</b>	1524 (60)	1521 (60)	1003 (39)	1661 (65)	1804 (71)	1936 (76)	825 (32.5)	825 (32.5)
<b>Width in mm (in.)</b>	508 (20)	508 (20)	790 (31)	350 (14)	350 (14)	350 (14)	715 (28)	792 (31)
<b>Height in mm (in.)</b>	1140 (45)	1324 (52)	684 (27)	1115 (44)	1115 (44)	1115 (44)	716 (28)	716 (28)
<b>Cleanout Access Diameter in mm (in.)</b>	248 (9.8)	248 (9.8)	190 (7.5)	383 (15)	383 (15)	383 (15)	190 (7.5)	190 (7.5)
<b>No. of M4 Valve Sections (max.)</b>	16	16	9	11	11	11	8	9
<b>No. of Power Float Manifold capable</b>	2	2	2	2	2	2	1	0
<b>No. of RC Controller capable</b>	4	4	3	2	2	2	0	0

N.B. All dimensions are approximate, intended for illustrative purposes only. Request a certified drawing before beginning construction or installation.

Bosch Rexroth Canada  
 490 Prince Charles Drive S  
 Welland, ON L3B 5X7  
 Phone: (905) 735-0510  
 Toll Free: 1-877-COMPU-11  
 info@boschrexroth.ca  
 www.boschrexroth.ca/cs

© Bosch Rexroth Canada Corp. reserves the right to revise this information at any time and for any reason. We further reserve the right to make changes thereto without notice or obligation, to any party making use of the information contained in this document.